



MIDWEST
FASTENERS, INC.

SURESHOT

Hand Held – Capacitor Discharge
Welding System

Owner's Manual

CONTENTS

SECTION 1:	Safety Precautions	3
SECTION 2:	Specifications	8
SECTION 3:	Set Up	9
SECTION 4:	Normal Operation	11
SECTION 5:	System Maintenance	14
SECTION 6:	Troubleshooting	15
SECTION 7:	Schematic Diagram	17
SECTION 8:	Parts Lists	18

BE SURE THIS INFORMATION REACHES THE OPERATOR. EXTRA COPIES ARE AVAILABLE THROUGH YOUR SUPPLIER.



CAUTION

THESE INSTRUCTIONS ARE FOR EXPERIENCED OPERATORS. If you are not fully familiar with the principles of operation and safe practices for arc welding equipment, we urge you to read AWS SP - "Safe Practices" available from the American Welding Society.

DO NOT permit untrained persons to install, operate, or maintain this equipment. **DO NOT** attempt to install or operate this equipment until you have read and fully understand these instructions. If you do not fully understand these instructions, contact your supplier for further information. Be sure to read the Safety Precautions before installing or operating this equipment.

WARRANTY

WARRANTY: All parts used in the assembly of your MIDWEST FASTENERS SureShot Stud Welding System are fully guaranteed for three (3) years from factory shipment date.

Under this warranty, MIDWEST FASTENERS reserves the right to repair or replace, at its option, defects in material or workmanship which occur during the warranty period. Notice of any claim for warranty repair must be furnished to MIDWEST FASTENERS within ten (10) days after the defect is discovered. MIDWEST FASTENERS does not assume liability for shipping, or liability for any labor or material related to use of this system, unless such costs are expressly authorized in writing by MIDWEST FASTENERS.

MIDWEST FASTENERS, INC. does not warrant defects in welders, parts or accessories resulting from abuse, improper installation or use, or for reasons beyond its control.

This warranty is valid only when welding pins and/or studs purchased from or approved by MIDWEST FASTENERS.

SAFETY PRECAUTIONS

USERS RESPONSIBILITY

This equipment will perform in conformity with the description contained in this manual and accompanying labels and/or inserts when installed, maintained and repaired in accordance with the instructions provided. This equipment must be checked periodically. Defective equipment should not be used. Parts that are broken, missing, worn, distorted or contaminated should be replaced immediately. Should such repair or replacement become necessary, the manufacturer recommends that a telephone or written request for service advice be made to the Authorized Distributor from whom purchased.

This equipment or any of its parts should not be altered without the prior written approval of the manufacturer. The user of this equipment shall have the sole responsibility for any malfunction which results from improper use, faulty maintenance, damage, improper repair or alteration by anyone other than the manufacturer or a service facility designated by the manufacturer.



This symbol appearing throughout this manual means
ATTENTION! BE ALERT!
Your safety is involved.

The following definitions apply to **DANGER, WARNING, CAUTION** found throughout this manual.



DANGER

Used to call attention to immediate hazards which, if not avoided, will result in immediate, serious personal injury or loss of life.



WARNING

Used to call attention to potential hazards which could result in personal injury or loss of life.



CAUTION

Used to call attention to hazards which could result in minor personal injury.



WARNING: These safety precautions are for your protection. They summarize precautionary information from the references listed in the Additional Safety Information section. Before performing any installation or operating procedures, be sure to read and follow the safety precautions listed as well as all other manuals, material safety data sheets, labels, etc. **Failure to observe safety precautions can result in injury or death.**



ARC RAYS CAN BURN EYES AND SKIN -

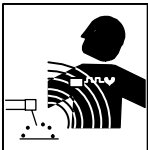
The arc, like the sun, emits ultraviolet and infrared (visible and invisible) and other radiation and can injure skin and eyes. Sparks and hot metal can fly off the weld. Training in the proper use of the processes and equipment is essential to prevent accidents. Therefore:

- 1) Always wear safety glasses with side shields in any work area, even if wearing a welding helmet, face shields and goggles are also required.
- 2) Always use a face shield fitted with the correct shade of filter to protect your face and eyes when welding or watching (See ANSI Z49.1 and Z87.1 listed in Safety Standards). Cover sparks and rays of the arc when operating or observing operations.
- 3) Use protective non-flammable screens or barriers to protect others from flash and glare. Warn bystanders not to watch the arc and not to expose themselves to the rays of the electric-arc or hot metal.
- 3) Wear flameproof gauntlet type gloves, heavy long-sleeve shirt, cuffless trousers, high topped shoes, and a welding helmet or cap for hair protection, to protect against arc rays and hot sparks or hot metal. A flameproof apron may also be desirable as protection against radiated heat and sparks.
- 4) Hot sparks or metal can lodge in rolled up sleeves, trousers cuffs or pockets. Sleeves and collars should be kept buttoned, and open pockets eliminated from the front of clothing.
- 6) Use goggles over safety glasses when chipping slag or grinding. Chipped slag may be hot and can fly far. Bystanders should also wear goggles over safety glasses.



BUILD UP OF GAS CAN INJURE OR KILL -

- 1) Shut off shielding gas supply when not in use.
- 2) Always ventilate confined spaces or use approved air-supplied respirator.

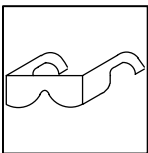


ELECTRIC AND MAGNETIC FIELDS -

Electric and Magnetic Fields may be dangerous. Electric current flowing through any conductor causes localized Electric and Magnetic Fields (EMF). Welding and cutting current creates EMF around welding cables and welding machines.

Therefore:

- 1) Welders having pacemakers should consult their physician before welding. EMF may interfere with some pacemakers.
- 2) Exposure to EMF may have other health effects which are unknown.
- 3) Welders should use the following procedures to minimize exposure to EMF:
 - A) Route the electrode and work cables together. Secure them with tape when possible.
 - B) Never coil the torch or work cable around your body.
 - C) Do not place your body between the torch and work cables. Route cables on the same side of your body.
 - D) Connect the work cable to the work piece as close as possible to the area being welded.
 - E) Keep welding power source and cables as far away from your body as possible.



FLYING METAL CAN INJURE EYES -

Welding, chipping, wire brushing and grinding can cause sparks and flying metal. As welds cool, they can throw off slag. Therefore:

- 1) Wear approved safety glasses with side shields even under your welding helmet.



ELECTRICAL SHOCK -

Contact with live electrical parts and ground can cause severe injury or death. The electrode (the weld stud and chuck) and work circuit (ground) are electrically live whenever the output is on. The input power circuit and the machine internal circuits are also live whenever power is on. Improperly installed or improperly grounded equipment is a hazard. Therefore:

- 1) Disconnect input power before installing or servicing this equipment. Lock-out/tagout input power according to OSHA 29 CFR 1910.147 (see Safety Standards).
- 2) Do not touch live electrical parts. Do not touch the electrode (stud) if you are in contact with the work, ground, or another electrode from a different machine.
- 3) Be sure the power source frame (chassis) is connected to the ground system of the input power.
- 4) When making input connections, attach proper grounding conductors first and then double-check connections.
- 5) Always verify the supply ground - check and be sure that input power cord ground wire is properly connected to ground terminal in disconnect box or that cord plug is connected to a properly grounded receptacle outlet.
- 6) Refer to ANSI/ASC Standard Z49.1 (listed on page 6) for specific grounding recommendations. Do not mistake the work lead for a ground cable.
- 7) Clamp work cable with good metal-to-metal contact (spring and/or magnetic clamps are not recommended) to work piece as near the weld as practical.
- 8) DO NOT use welding current in damp areas, if movement is confined, or if there is danger of falling.
- 9) Properly install and ground this equipment according to this Owner's Manual and national, state and local codes.
- 10) Connect the work cable to the work piece. A poor or missing connection can expose you or others to a fatal shock.
- 11) Keep everything dry, including clothing, work area, cables, torch/electrode holder and power source.
- 12) Wear dry, hole-free insulated gloves & body protection before turning on power.
- 13) Insulate yourself from work and ground using dry insulating mats or covers big enough to prevent any physical contact with the work or ground.
- 14) Don't stand directly on metal or the earth while working in tight quarters or a damp area; stand on dry boards or an insulating platform and wear rubber-soled shoes.
- 15) Turn off all equipment when not in use.
- 16) Use well-maintained equipment. Frequently inspect input power cord and output weld cables for damage or bare wiring. Replace worn or damaged cables immediately; bare wiring can kill. Repair or replace damaged parts at once. Maintain this unit according to the manual.
- 17) Do not use worn, damaged, undersized or poorly spliced cables.
- 18) Do not drape cables over your body.
- 19) If earth grounding of the work piece is required, use a separate cable.
- 20) Wear a safety harness if working above floor level.
- 21) Keep all panels and covers securely in place.
- 22) Insulate work clamp when not connected to work piece to prevent contact with any metal object.
- 23) Don't connect multiple electrodes or work cables to a single weld output terminal.

SIGNIFICANT DC VOLTAGE exists after removal of the input power on inverters. Turn off inverter, disconnect input power, and discharge input capacitors according to instructions in Maintenance Section before touching any parts.



FUMES AND GASES -

Welding produces fumes and gases. Breathing these fumes and gases can be hazardous to your health, particularly in confined spaces. Do not breathe fumes and gases. Shielding gases can cause asphyxiation. Therefore:

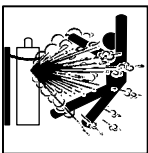
- 1) Keep your head out of the fumes. Do not breathe the fumes.
- 2) If inside, ventilate the area and/or use exhaust at the arc to remove welding fumes and gases.
- 3) If ventilation is poor, use an approved air-supplied respirator.
- 4) Read the Material Safety Data Sheets (MSDS) and the manufacturer's instructions for metals, consumables, coatings, cleaners and degreasers.
- 5) Work in a confined space only if it is well ventilated, or while wearing an air-supplied respirator. Always have a trained watch-person nearby. Welding fumes and gases can displace air and lower the oxygen level causing injury or death. Be sure the breathing air is safe.
- 6) Don't weld in locations near degreasing, cleaning or spraying operations. The heat & rays of an arc can react with vapors to form highly toxic & irritating gases.
- 7) Don't weld on coated metals, such as galvanized, lead or cadmium plated steel, unless the coating is removed from the weld area, the area is well ventilated, and if necessary, while wearing an air-supplied respirator. The coatings and any metals containing these elements can give off toxic fumes if welded.
- 8) Do not weld, cut, or gouge on materials such as galvanized steel, stainless steel, copper, zinc, lead, beryllium or cadmium unless positive mechanical ventilation is provided. Do not breathe fumes from these materials.
- 9) If you develop momentary eye, nose, or throat irritation while operating, this is an indication that ventilation is not adequate. Stop work and take necessary steps to improve ventilation in the work areas. Do not continue to operate if physical discomfort persists.
- 10) Refer to ANSI/ASC Standard Z49.1 for specific ventilation recommendations.



WELDING CAN CAUSE FIRES AND EXPLOSIONS -

Welding on closed containers, such as tanks, drums or pipes, can cause them to blow up. Sparks can fly off from the welding arc. The flying sparks, hot work piece, and hot equipment can cause fires and burns. Accidental contact of electrode to metal objects can cause sparks, explosion, overheating or fire. Check and be sure the area is safe before doing any welding. Therefore:

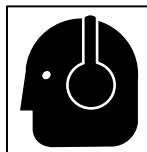
- 1) Protect yourself and others from flying sparks and hot metal.
- 2) Do not weld where flying sparks can strike flammable material.
- 3) Remove all combustible materials a minimum of 35 ft. away from the welding arc or cover the materials with a protective nonflammable covering. Combustible materials include wood, cloth, sawdust, liquid and gas fuels, solvents, paints and coatings, paper, etc.
- 4) Hot sparks or hot metal can fall through cracks or crevices in floors or wall openings and cause a hidden smoldering fire or fires on the floor below. Make certain that such openings are protected from hot sparks and metal.
- 5) Do not weld, cut, or perform other hot work until the work piece has been completely cleaned so that there are no substances on the work piece which might produce flammable or toxic vapors.
- 6) Be aware that welding on a ceiling, floor, bulkhead or partition can cause fire on the hidden side.
- 7) Do not weld on closed containers such as tanks, drums or pipes unless they are properly prepared according to AWS F4.1.
- 8) Connect work cable to the work as close to the welding area as practical to prevent welding current from traveling long, possibly unknown paths and causing electric shock and fire hazards.
- 9) Do not use welder to thaw frozen pipes.
- 10) Remove electrode (weld stud) from the stud weld gun when not in use.
- 11) Remove any combustibles, such as a butane lighter or matches from your person before doing any welding.
- 12) Have appropriate fire extinguishing equipment handy for instant use, such as a garden hose, water pail, sand bucket or portable fire extinguisher. Be sure you are trained for proper use.
- 13) Do not use equipment beyond its ratings. For example, overloaded welding cable can overheat and create a fire hazard.
- 14) After completing operations, inspect the work area to make certain there are no hot sparks or hot metal which could cause a later fire. Use fire watchers when necessary.
- 15) For additional information, refer to NFPA Standard 51B, "Fire Prevention in Use of Cutting and Welding Processes," available from the National Fire Protection Association, Batterymarch Park, Quincy, MA 02269.



CYLINDER HANDLING -

Shielding gas cylinders contain gas under high pressure. If damaged or mishandled a cylinder can explode and violently release gas. Sudden rupture of cylinder, valve, or relief device can injure or kill. Since gas cylinders are normally part of the welding process, be sure to treat them carefully. Therefore:

- 1) Protect compressed gas cylinders from excessive heat, mechanical shocks, slag, open flames, sparks and arcs.
- 2) Keep cylinders away from any welding or other electrical circuits.
- 3) Never drape a welding gun over a gas cylinder.
- 4) Never allow a welding electrode (weld stud) to touch any cylinder.
- 1) Use the proper gas for the process and use the proper pressure reducing regulator, hoses and fittings designed to operate from the specific compressed gas cylinder. Do not use adaptors. Maintain hoses and fittings and other associated parts in good condition.
- 2) Always secure cylinders in an upright position by chain or strap to suitable hand trucks, undercarriages, benches, walls, post, or racks. Never secure cylinders to work tables or fixtures where they may become part of an electrical circuit.
- 3) When not in use, keep cylinder valves closed. Have valve protection cap in place if regulator is not connected. Secure and move cylinders by using suitable hand trucks. Avoid rough handling of cylinders.
- 4) Locate cylinders away from heat, sparks, and flames. Never strike an arc or weld on a cylinder; it will explode.
- 6) Turn face away from valve outlet when opening cylinder valve.
- 5) For additional information, refer to CGA Standard P-1, "Precautions for Safe Handling of Compressed Gases in Cylinders", which is available from Compressed Gas Association, 1235 Jefferson Davis Highway, Arlington, VA 22202.



NOISE CAN DAMAGE HEARING -

Noise from some processes or equipment can damage hearing. Therefore:

- 1) Wear approved ear protection if noise level is high.



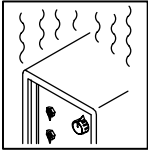
FIRE OR EXPLOSION HAZARD -

- 1) Do not install or place unit on, over, or near combustible surfaces.
- 2) Do not install unit near flammables.
- 3) Do not overload electrical wiring - be sure power supply system is properly sized, rated and protected to handle the unit.



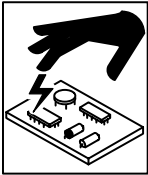
FALLING UNITS CAN CAUSE INJURY -

- 1) Use lifting eye to lift unit only, NOT running gear, gas cylinders or any other accessories.
- 2) Use equipment of adequate capacity to lift and support unit.
- 3) If using lift forks to move unit, be sure forks are long enough to extend beyond opposite side of the unit.



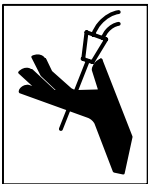
OVERUSE CAN CAUSE OVERHEATING -

- 1) Allow cooling period; follow rated duty cycle.
- 2) Reduce current or reduce duty cycle before starting to weld again.
- 3) Do not block or filter airflow to unit



STATIC (ESD) CAN DAMAGE PC BOARDS -

- 1) Put on grounded wrist strap BEFORE handling boards or parts.
- 2) Use proper static-proof bags and boxes to store, move or ship PC boards.



WELDING WIRE CAN CAUSE INJURY -

- 1) Do not press weld gun trigger until instructed to do so.
- 2) Do not point weld gun toward any part of the body, other people or any metal when threading welding wire.



MOVING PARTS CAN CAUSE INJURY -

- 1) Keep hands, hair, loose clothing and tools away from moving parts.
- 2) Keep away from pinch points such as drive rolls.



EQUIPMENT MAINTENANCE -

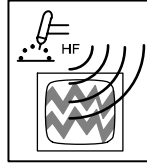
Faulty or improperly maintained equipment can cause injury or death. Therefore:

- 1) Always have qualified personnel perform the installation, troubleshooting, and maintenance work. Do not perform any electrical work unless you are qualified to do the work.
- 2) Before performing any work inside a power source, disconnect the power source from the incoming electrical power using the disconnect switch at the fuse box before working on the equipment.
- 3) Maintain cables, grounding wire, connections, power cord, and power supply in safe working order. Do not operate any equipment in faulty condition.
- 4) Do not abuse any equipment or accessories. Keep equipment away from:
 - heat sources such as furnaces
 - wet conditions such as water puddles and inclement weather
 - oil or grease
 - corrosive atmospheres.
- 5) Keep all safety devices and cabinet covers in position and in good repair.
- 6) Use equipment only for its intended purpose. Do not modify it in any manner.



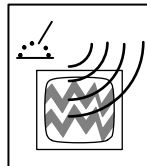
MOVING PARTS CAN CAUSE INJURY -

- 1) Keep hands, hair, loose clothing and tools away from moving parts such as fans.
- 2) Keep all doors, panels, covers and guards closed and securely in place.
- 3) Always disconnect electrical power prior to service to prevent the fan from starting unexpectedly.



H.F. RADIATION CAN CAUSE INTERFERENCE -

- 1) High-Frequency (H.F.) can interfere with radio navigation, safety services, computers and communications equipment.
- 2) Have only qualified persons familiar with electronic equipment perform this installation.
- 3) The user is responsible for having a qualified electrician promptly correct any interference problem resulting from the installation.
- 4) If notified by the FCC about interference, stop using the equipment at once.
- 5) Have the installation regularly checked and maintained.
- 6) Keep high-frequency source doors and panels tightly shut and use grounding and shielding to minimize the possibility of interference.



ARC WELDING CAN CAUSE INTERFERENCE -

- 1) Electromagnetic energy can interfere with sensitive electronic equipment such as computers and computer-driven equipment such as robots.
- 2) Be sure all equipment in the welding area is electro-magnetically compatible.
- 3) To reduce possible interference, keep weld cables as short as possible, close together, and down low, such as on the floor.
- 4) Locate welding operation 100 meters from any sensitive electronic equipment.
- 5) Be sure this welding machine is installed and grounded according to this manual.
- 6) If interference still occurs, the user must take extra measures such as moving the welding machine, using shielded cables, using line filters, or shielding the work area.



HOT PARTS CAN CAUSE SEVERE BURNS -

- 1) Do not touch hot parts with bare hands.
- 2) Allow cooling period before working on welding tool (gun or torch).

EMF Information

Considerations about welding and the effects of low frequency Electric and Magnetic Fields (EMF):

Welding current, as it flows through welding cables, will cause electromagnetic fields. There has been and still is some concern about such fields. However, after examining more than 500 studies spanning 17 years of research, a special blue ribbon committee of the National Research Council concluded that: "The body of evidence, in the committee's judgement, has not demonstrated that exposure to power-frequency electric and magnetic fields is a human-health hazard." However, studies are still going forth and evidence continues to be examined. Until the final conclusions of the research are reached, you may wish to minimize your exposure to electromagnetic fields when welding or cutting.

California Proposition 65 Warnings

Welding or cutting equipment produces fumes or gases which contain chemicals known to the State of California to cause birth defects and, in some cases, cancer. (California Health & Safety Code Section 25249.5 et seq.)

Battery posts, terminals and related accessories contain lead and lead compounds, chemicals known to the State of California to cause cancer and birth defects or other reproductive harm. Wash hands after handling.

For Gasoline Engines:

Engine exhaust contains chemicals known to the State of California to cause cancer, birth defects, or other reproductive harm.

For Diesel Engines:

Diesel engine exhaust and some of its constituents are known to the State of California to cause cancer, birth defects, and other reproductive harm.

ADDITIONAL SAFETY INFORMATION -

For more information on safe practices for electric arc welding refer to the following publications:

American Welding Society

550 N.W. LeJuene Road, Miami, FL 33126, (phone 305-443-9353, website: www.aws.org)

- 1) ANSI/ASC Z49.1 - Safety in Welding, Cutting and Allied Processes
- 2) AWS CH5 - Recommended Practices for Stud Welding
- 3) AWS D1.1 - Structural Welding
- 2) AWS C5.1 - Recommended Practices for Plasma Arc Welding
- 3) AWS C5.6 - Recommended Practices for Gas Metal Arc Welding
- 4) AWS SP - Safe Practices - Reprint, Welding Handbook
- 5) ANSI/AWS F4.1, Recommended Safe Practices for Welding and Cutting of Containers and Piping

National Fire Protection Association

P.O. Box 9101, 1 Battery March Park, Quincy, MA 02269-9101 (phone 617-770-3000, website: www.nfpa.org and sparky.org)

- 1) NFPA Standard 70 - National Electrical Code
- 2) NFPA Standard 51B - Standard for Fire Prevention During Welding, Cutting and Other Hot Work

Compressed Gas Association

1735 Jefferson Davis Highway, Suite 1004; Arlington, VA 22202-4102 (phone 703-412-0900, website: www.cganet.com)

- 1) CGA Pamphlet P-1 - Safe Handling of Compressed Gas Cylinders

Canadian Standards Association

Standards Sales, 178 Rexdale Blvd, Rexdale, Ontario, Canada M9W 1R3 (phone 800-463-6727 in Toronto 416-747-4044, website: www.csa-international.org)

- 1) CSA Standard W117.2 - Code for Safety in Welding and Cutting

American National Standards Institute

11 West 42nd Street, New York, NY 10036-8002 (phone 212-642-4900, website: www.ansi.org)

- 1) ANSI Standard Z87.1 - Practice for Occupational and Educational Eye and Face Protection

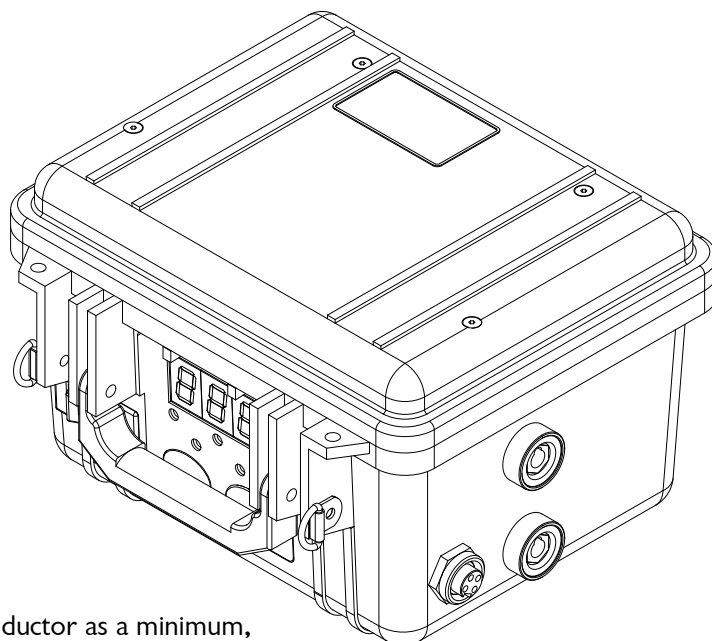
U.S. Government Printing Office

Superintendent of Documents, P.O. Box 371954, Pittsburgh, PA 15250 (phone 312-353-2220, website: www.osha.gov)

- 1) Title 29, Code of Federal Regulations (CFR), Part 1910, Subpart Q, & Part 1926, Subpart J - Occupational Safety and Health Standards for General Industry

With any power source, it may or may not contain a battery which may contain hazardous materials. Please follow local battery disposal procedures when changing batteries or disposing of the power supply.

SPECIFICATIONS



POWER REQUIREMENTS

Fusing / Cable Recommendations

Input Voltage	Frequency	Fusing
120VAC	60Hz	15A

If an extension cord is required for connection to electricity
MIDWEST strongly suggests the following:

- direct connection to power supply (if possible),
- the use of 12/3, SJTW, Extra Heavy Duty, 3-Wire Conductor as a minimum,
- and a maximum extension length of 50 feet (or 15 meters).

While SureShot may operate outside of these parameters, observance of these minimums for electrical extension cords will allow the best performance of your system. Likewise in some instances, observance of these guidelines may not guarantee operation based on electrical configuration on certain sites.

WARNING

WARNING: Do not defeat the ground (third prong) on the incoming AC power cable. SureShot's incoming power supply must have the third prong ground wiring active. SureShot will NOT function without this type electrical ground and will display an "E12" error code before the unit is turned on if the ground leg of the power input is not present or is not functioning.

Electrical

Input Voltage
120VAC - single phase

Duty Cycle
24 Max Voltage Welds per minute @ 150V

Max Voltage output
150V @120V or greater input voltage

Amperage output
3,000A to 9,000A depending on settings and
the type of weld gun being used.

Mechanical

Dimensions	Inches	mm
Height	6.8"	175
Width	10.6"	270
Length	9.1"	235

Weight

Sizes	Lbs.	Kg.
Power Unit	10.5	4.76

SET UP

BASE METAL PREPARATION

As with most welding, clean weld studs and clean base metal will provide the best results. Typical weld penetration is .002 to .004 inches (.05 to .1 mm). Mill scale may easily be this thick. When welding to steel with mill scale, the scale must be removed first to achieve quality weld results.

A common CD welding mistake is to use a center punch mark for location. The ignition tip locates nicely in the center punch mark, but it effectively shortens the tip length. Since the tip is sitting in a depression, the distance from the workpiece to the face of the weld stud is shorter. Usually, this results in bad welds. Midwest Fasteners does not recommend the use of center punch marks for location.

Aluminum can quickly form a layer of oxide. Oxide is non-conductive (not good for welding) and is tough. If welding onto aluminum is causing problems, it is often best to remove the oxide layer. This can be accomplished via abrasives. A stainless steel brush works well.

LOCATION

If the power supply is stationary it should be located:

- On a flat, level surfaces with adequate air circulation.
- Near the work area to limit welding cable length (shorter lengths are preferred). Avoid looping the weld cables for optimal stud welding results.
- In a dry area away from moisture.
- To protect it from grinding dust and other contaminants.
- To provide min. 6" clearance on all sides for cooling.

If the power supply is worn it should be located:

- On your shoulder with strap provided. Note: Remove if heat should become excessive.
- In a dry area away from moisture. Do not use in the rain or in standing water.
- Near the work area to limit welding cable length (shorter lengths are preferred). Avoid looping the weld cables.
- Care should be taken to avoid a falling hazard as the ground cable and weld gun cables can catch on other objects. When working off the ground a safety harness should always be used.
- To protect it from grinding dust and other contaminants.

Weld Gun

There are two cables on your welding gun: a weld cable and a control cable.

Weld Cable (Dinse connector)

The weld cable inserts in the following way: line up the rectangular protrusion on the weld cable with the notch on the top side of the panel receptacle (typically the weld cable goes into the negative (-) receptacle). Push the weld cable connector straight in as far as it will go [Step 1]. Hand turn clockwise to tighten [Step 2]. See Figure 3.

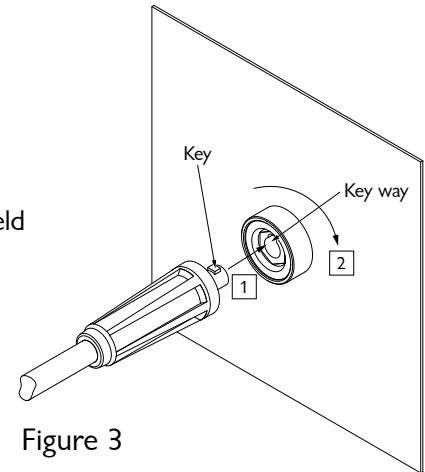


Figure 3

Ground Cable

The ground cable is connected in the same fashion as the weld cable. The ground cable typically is inserted into the positive (+) receptacle for straight polarity welding.

Control Cable

There is a key in the end of the control cable connector. Align the key in the cable connector with the key way in the front panel control cable receptacle. Push the cable connector into the front panel receptacle [Step 1]. When the two are seated turn the screw ring on the cable connector clockwise [Step 2]. This will lock the two together. See Figure 4. The screw ring does not need to be overly tight.

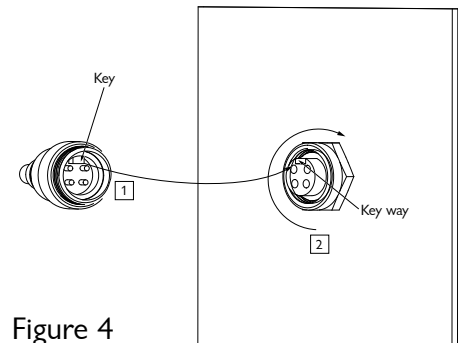


Figure 4

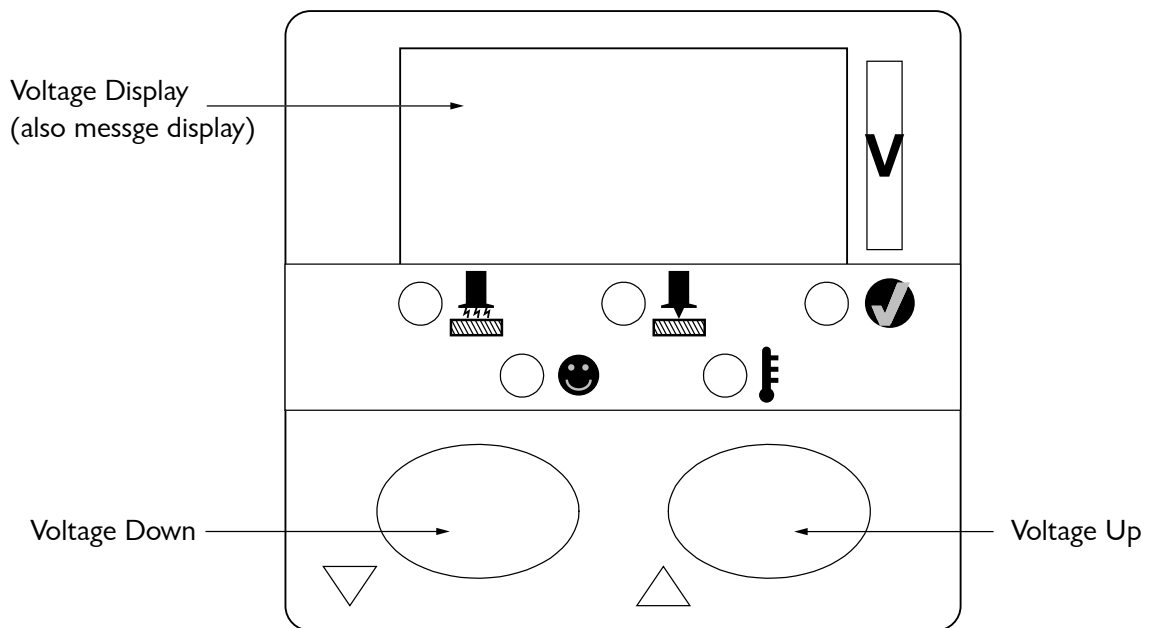
Cable Connections

Straight Polarity: In straight polarity the weld cable is connected to the negative (-) electrode. The ground lead is connected to the positive (+) receptacle (often labeled ground). This cable arrangement is the preferred arrangement for welding ferrous metals.

Reverse Polarity: Reverse polarity reverses the weld gun and ground connections. The weld gun weld cable connects to the positive (+) receptacle and the ground cable connects to the negative (-) electrode. This cable arrangement can be for welding materials such as aluminum, brass or galvanized.

Layout: The cables should be laid out straight. If the cables are coiled the amount of energy available for weld can be reduced and result in reduced quality welds. This is true for both the weld gun weld cable and the ground cable.






NORMAL OPERATION



DISPLAY FUNCTIONS

The main Weld Voltage Display shows the voltage that will be used for welding. In addition the Weld Voltage Display will display faults present within the unit (see section 5 for additional details).

There are 5 indicator lights.

- | | |
|---|---|
|  Trigger (Red) | This indicator lights when the trigger is pulled. This shows the trigger is functioning normally. |
|  Contact (Amber) | This indicator lights when the unit detects contact with the work. This means there is a good welding path. |
|  Ready (Green) | This indicator lights when the unit is ready to weld. If the operator changes the weld voltage, this light will go out for a moment as the proper voltage is reached. |
|  Thermal Overload (Red) | Turns on when the weld unit's internal temperature is outside the safe operating range. |
|  Safety (Green) | Safety circuits within the unit are operating properly when lit. |

Voltage Control

The two rubber buttons located on the weld unit face plate controls the unit's weld voltage. Press the right button to increase the weld voltage up to a maximum of 150V, press the left button to decrease the weld voltage down to a minimum of 40V. The power supply will take a moment to achieve desired setting. The Ready light will light green when the power source is ready to weld. Press and hold either button to rapidly change indicated value, quickly press buttons for fine adjustment.

POWER UP

When the unit is plugged in, it performs a self check, after about 2 seconds the Safety light will be lit. This means the unit is functioning properly. Even if the unit is not switched on, when operating properly, the Safety light will be lit.

Press the power switch to its on position (1). Provided no errors are detected the power supply will then charge to the voltage level indicated on the Main Weld Voltage Display. When charging is complete (3 seconds maximum) the Ready light will turn on. Note: If the trigger is held or the weld gun is in contact with the work, charging will be disabled until the trigger is released and the weld gun is not in contact with the work.

Note: A ground fault detection circuit is built into the unit. If a ground fault is detected the unit will shut off and display error E01. Ground fault detection is used for Operator Safety.



WARNING

WARNING: Before applying power up to the unit, make sure all cables are properly connected.

Note: A proper earth ground connection is essential for the safe operation of this unit. If earth ground is not detected the power source will display “error E12” and the unit cannot be turned on.

Weld Gun Settings

Refer to the Weld Gun Manual.

Welding Sequence

Load a weld stud into the properly sized collet. Position the weld gun against the work. Press down on the weld gun to make sure the apparatus seats firmly against the work. While holding the gun in position, pull the trigger.

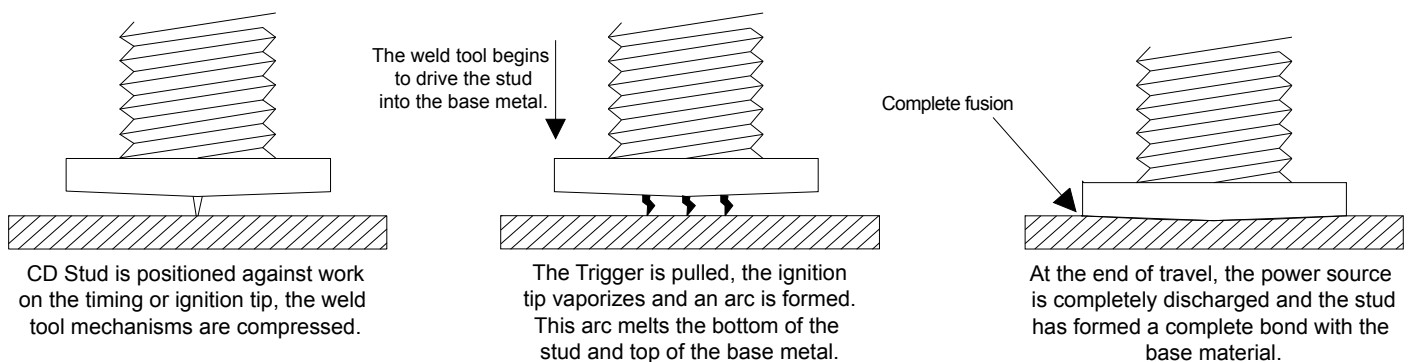
The weld will initiate and complete. There can be an audible pop (hearing protection is recommended) associated with the weld process. This completes a weld sequence.

Note: Contact must be made BEFORE the trigger is pressed, otherwise welding will not occur.

Post Weld Sequence

After the weld is complete pull the weld gun off the stud. When removing the gun, pull the gun straight off the weld stud to prevent damage to the collet. Once the weld gun is pulled off the work, and the trigger is released the unit will fully charge up to the set point and be ready for the next weld.

CONTACT CAPACITOR DISCHARGE PROCESS



WELD QUALITY VISUAL INSPECTION

Too Hot

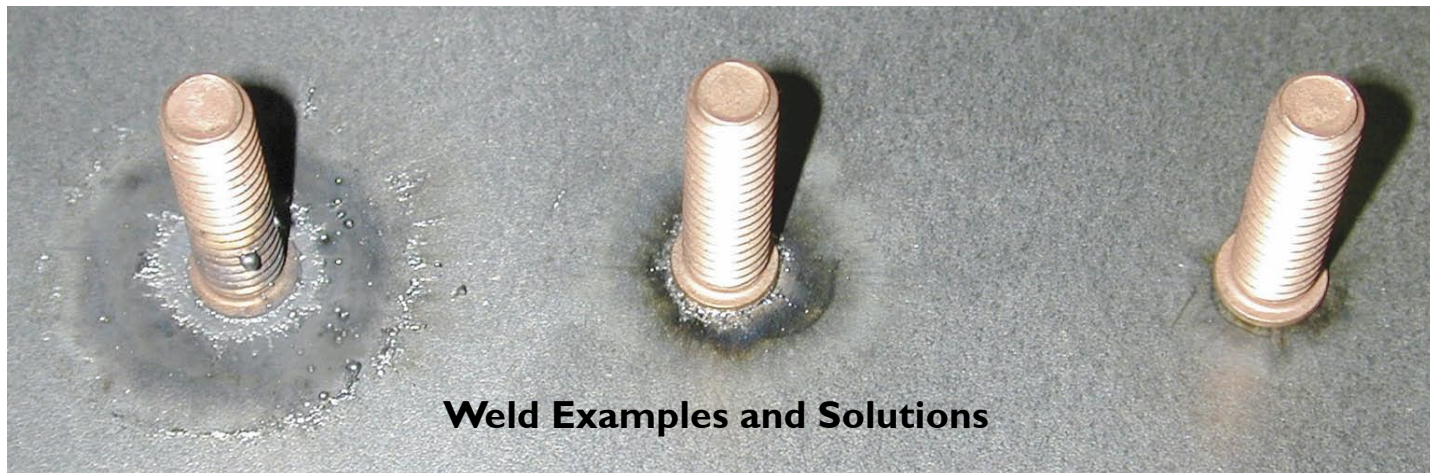
Excessive weld flash and weld spatter. This weld may break.

Correct

Normal weld flash. No significant weld spatter. This will be a good, strong weld.

Too Cold

Little weld flash. This weld may break.



ALL: Reduce Voltage
Contact: Increase Spring Pressure

No Adjustments Required

ALL: Increase Voltage
Contact: Reduce Spring Pressure

ACCEPTABLE WELDING MATERIAL COMBINATIONS

Base Weld Surface Material	Acceptable Stud Material
LOW CARBON STEEL AISI 1006 to 1022	LOW CARBON STEEL AISI 1006 to 1010, STAINLESS STEEL 300 series except 303, COPPER ALLOY (brass) 260 and 268
STAINLESS STEEL 300 and 400 series except 303	LOW CARBON STEEL AISI 1006 to 1010, STAINLESS STEEL 300 series except 303
ALUMINUM ALLOYS 1100, 3000 series, 5000 series, 6061 and 6063	ALUMINUM ALLOYS 1100, 5086, 6063
ETP COPPER, LEAD FREE BRASS and ROLLED COPPER	LOW CARBON STEEL AISI 1006 to 1010, STAINLESS STEEL 300 series except 303, COPPER ALLOY (brass) 260 and 268

RECOMMENDED POWER SUPPLY

Contact Weld Gun Voltage Settings

Contact Weld Gun Recommended Voltage Settings											
Mild Steel				Stainless Steel				Aluminum			
Stud Size	Plunge	Voltage	Spring	Stud Size	Plunge	Voltage	Spring	Stud Size	Plunge	Voltage	Spring
12 ga Cuphead Pins		80	Silver								
10 ga Cuphead Pins		90	Silver								
12 ga	1/8	60	Silver	12 ga	1/8	60	Silver	12 ga	1/8	75	Black
10 ga	1/8	75	Silver	10 ga	1/8	75	Silver	10 ga	1/8	90	Black
#4	1/8	60	Silver	#4	1/8	60	Silver	#4	1/8	75	Black
#6	1/8	75	Silver	#6	1/8	75	Silver	#6	1/8	90	Black
#8	1/8	85	Silver	#8	1/8	85	Silver	#8	1/8	105	Black
#10	1/8	100	Silver	#10	1/8	100	Silver	#10	1/8	120	Black
3MM	1/8	75	Silver	3MM	1/8	75	Silver	3MM	1/8	90	Black
4MM	1/8	85	Silver	4MM	1/8	85	Silver	4MM	1/8	105	Black
5MM	1/8	100	Silver	5MM	1/8	100	Silver	5MM	1/8	120	Black

SYSTEM MAINTENANCE

Power Supply

This unit is equipped with a fresh air intake filter. This filter should be replaced on a semi-annual basis. If the environment is particularly dirty, the filter should be replaced more frequently.

On an annual basis, the unit should be opened up and thoroughly blown out so it is free of all contaminants.

Welding Gun

Typically, most trouble stems from the stud weld gun. The stud weld gun should be serviced once every quarter. Monthly service may be required if use is exceptionally heavy. Please refer to the stud weld gun service manual for maintenance guidelines and instructions.

Cables

Cables can be a frequent trouble source. Users can sometimes drag the power supply by the cables. This can damage cables. Whenever the weld gun service is performed, the cables should be visually inspected for worn/damaged insulation or fraying wire. If the cables are damaged they should be repaired to prevent any loss of weld quality and to protect operator safety.

BUILT IN EQUIPMENT SAFETY

A fault in the welding power supply can create a potentially dangerous condition. The microprocessor continually monitors the system for faults and shuts the unit off when one is detected. This is done for operator and equipment safety purposes. The unit can be restarted, but will shut down again as soon as the fault condition is detected. The unit must be repaired. Serious faults, resulting from component failure, disable the unit for operator safety.

TROUBLESHOOTING



DANGER

This guide references components inside the welding power supply. Working inside a capacitor discharge (CD) power supply is inherently dangerous. Do not attempt to service components inside a CD power supply unless you have been trained in the proper safety and service procedures. If you have questions, consult your distributor or the factory directly.

GENERAL NOTE: Error Codes

The Error Code notification system built into SureShot is a microprocessor based method of operator notification. Error Codes DO NOT generally mean the welder is “broken”, simply that an event has occurred which needs attention. The first step at any code is to consult the chart below for specifics on a particular event. Codes can be “cleared” by removing electrical supply [disconnect power] and fully allowing the SureShot Control Unit to discharge. This is usually accomplished in a brief period of about (1) minute with the unit totally disconnected from power. If after disconnect, the same problems occur or continually reoccur, consult your MIDWEST Distributor or MIDWEST Technical Services at 800-852-8352 for proper assistance.

Problem	Possible Cause	Corrective Action
Error Code E01	A ground fault has been detected.	Verify that the outlet and other cables are wired correctly.
Error Code E02	The positive (+) side weld SCR is bad.	Have a qualified service tech check and replace the (+) weld SCR.
Error Code E03	The negative (-) side weld SCR is bad.	Check ground. Assure a clean, solid welding Ground connection through the provided Ground Cable. If problem continues and unit does not recover after power down, have a qualified service tech check the negative (-) weld SCR.
Error Code E04	The positive (+) phase, high charge SCR is bad.	Replace control board.
Error Code E05	The positive (+) phase, low charge SCR is bad.	Replace control board.
Error Code E06	The negative (-) phase, high charge SCR is bad.	Replace control board.
Error Code E07	The negative (-) phase, low charge SCR is bad.	Replace control board.

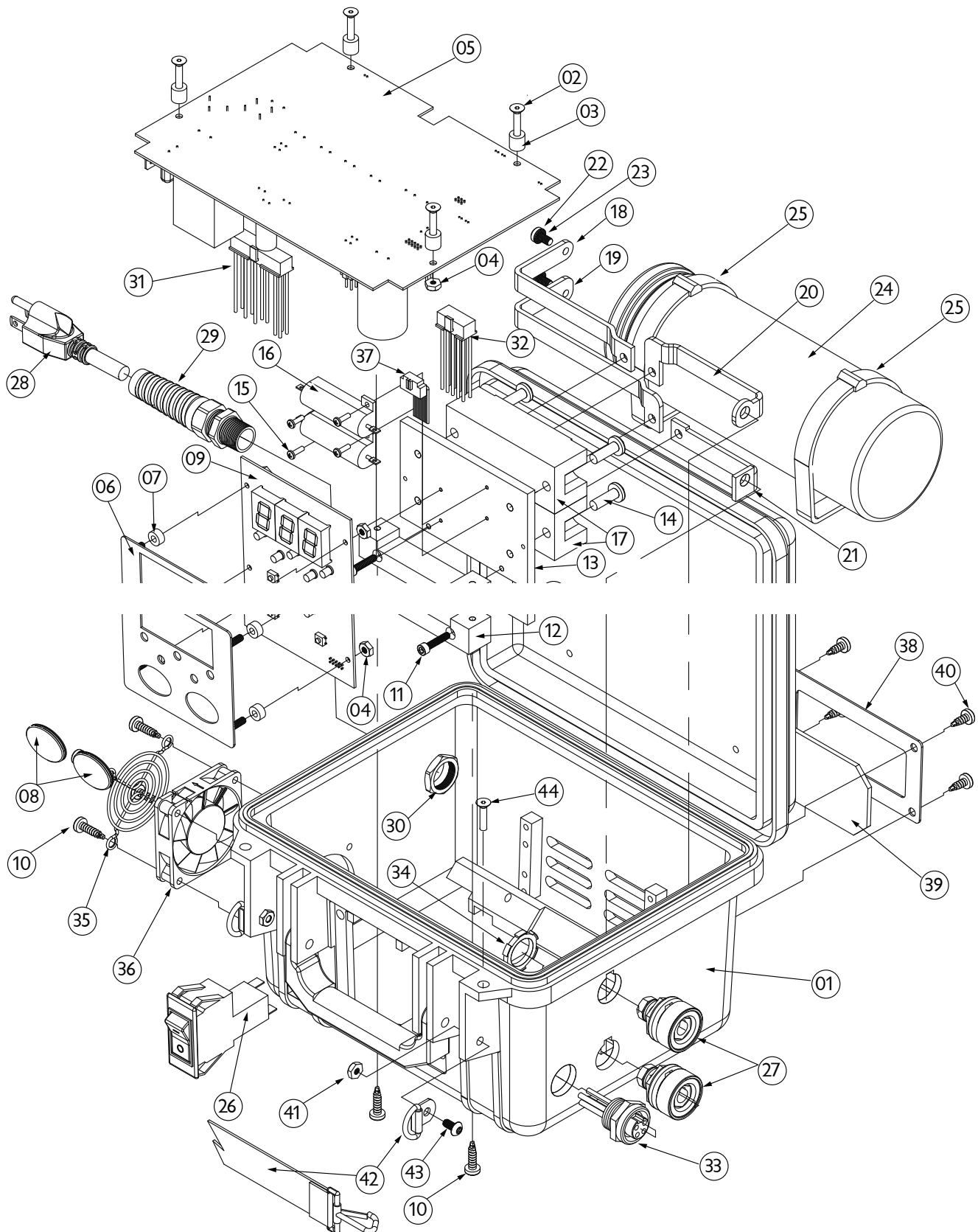
Error Code E08	The discharge FET is bad.	Replace control board.
Error Code E09	The discharge resistors are bad.	Have a qualified service tech check and replace the discharge resistors.
Error Code E12	No earth ground.	Check power cords and outlets. See “Warning” on page 8 in this manual..
All Other Error Codes		Call for service to have a qualified service tech assess problem.
Poor Weld	Poor surface condition.	Properly prepare the weld surface. Make sure it is free of contaminants such as dirt and oil. If there is heavy oxide (rust for steel or aluminum oxide for aluminum) it must first be removed.
	Poor ground connection.	Make sure all cable connections are in good condition and tightly secured.
	Broken or loose cables	Make sure all cable connections are in good condition and tightly secured.
	Use of center punch or witness marks.	Do not use center punch/witness marks to locate CD weld studs. They effectively reduce the tip length degrading weld performance.
	Loose collet or chuck.	The collet should have a firm hold on the weld stud. If you are able to easily (with no real resistance) pull the stud out of the collet then the collet is worn. Replace collet.
		If the inside of the collet looks like there are threads in it then the collet is worn out and should be replaced.
	Dirt in weld gun preventing smooth operation.	Service weld gun per your weld gun’s Operation Manual.
	Cables are coiled.	Uncoil weld and ground cables.
	Voltage incorrect for size stud to be welded.	Check the weld parameter table on page 15 to ensure that you are using the correct voltage for the size stud you are trying to weld.
	Studs or pins are not perpendicular to the work surface.	If the operator can not suitably hold the welding gun perpendicular to the work surface, then a template or fixture may be required.
	Arc Blow (all weld material moves or “blows” to one side).	Use double grounds, one on each side of the weld zone to balance current flow.
		Move ground connections away from weld zone.
		Space ground connections evenly around the weld zone.
	Incorrect plunge setting.	Adjust plunge per weld gun’s Operation Manual.
	Incorrect spring rate.	Adjust spring pressure per weld gun’s Operation Manual.

Problem	Possible Cause	Corrective Action
Arc blow (all weld material moves or “blows” to one side).	Ground(s) not positioned properly.	Reposition ground clamp to “steer” weld material. Weld material will flow away from the ground clamp.
		Use double grounds, one on each side of the weld zone to balance current flow.
Welder turns on but does not operate.	Broken ground cable or incomplete connection.	Make sure all cable connections are in good condition and are tightly secured.
	Broken weld gun, weld cable or incomplete connection.	Make sure all cable connections are in good condition and are tightly secured.
	Broken control cable.	Verify continuity on all leads in the control cable (black and white only for contact weld tools).
	Shorted trigger switch (trigger LED always on).	Verify continuity on the trigger switch. Replace if defective.
	Faulty trigger switch (trigger LED doesn’t light when trigger pulled).	Verify continuity on the trigger switch. Replace if defective.
	Faulty control board.	Replace control board.
Weld too hot regardless of voltage setting.	Faulty control board.	Replace control board.
Green ready LED doesn’t light.	Faulty control board.	Replace control board.
	Unit detects trigger.	Check cables. Ensure trigger switch is not broken.
	Unit detects contact.	Check cables. Ensure weld gun is not touching grounded work piece.
Green ready LED blinks, welder doesn’t operate.	Faulty control board.	Replace control board.
Yellow contact LED doesn’t light when weld gun is placed against work.	Missing or faulty ground.	Make sure all cable connections are in good condition and are tightly secured.
	Faulty control board.	Replace control board.

Red trigger LED doesn’t light.	Broken control cable.	Verify continuity on all leads in the control cable (black and white only for contact weld tools).
	Control cable not fully connected.	Make sure all cable connections are in good condition and are tightly secured.
	Faulty trigger switch.	Verify continuity on the trigger switch. Replace if defective.
	Faulty control board.	Replace control board.
Breaker blows each time unit is powered on.	Shorted weld capacitor.	Use a capacitance meter to test weld capacitor. Visually inspect weld capacitor for obvious signs of damage. Replace defective weld capacitor.
	Faulty control board.	Replace control board.
Welder doesn’t turn on.	Not plugged in.	Plug in unit.
	Panel breaker blown.	Reset breaker.
	Faulty power switch.	Replace power switch.
	Faulty control board.	Replace control board.
Welder shuts down immediately.	Weld SCR shorted.	Check Error Code (E02 + and E03 -) take corrective action to replace weld SCR.
	Faulty power switch.	Replace power switch.
	Faulty control board.	Replace control board.
Welder shuts down after a weld.	Weld SCR shorted.	Check Error Code (E02 + and E03 -) take corrective action to replace weld SCR.
	Faulty power switch.	Replace power switch.
	Faulty control board.	Replace control board.

[illegible]

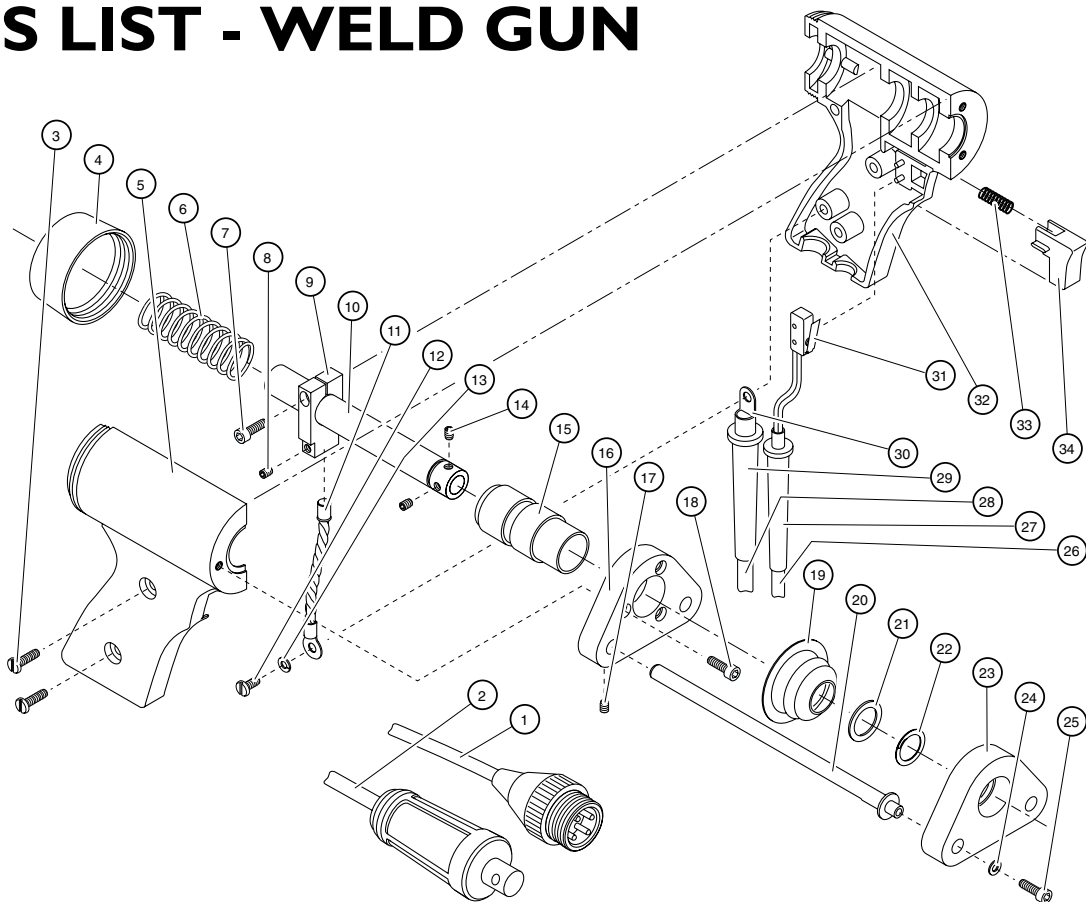
PARTS LIST - SURESHOT



PARTS LIST - SURESHOT

Item	Part No.	Description
1	050-3004-01	SureShot Housing Assembly
2	N/A	Flat Head Screw 8-32 x 1
3	050-3004-03	Stand Off, Main Board (Nylon)
4	N/A	Hex Nut 8-32
5	050-3004-05	Main Control PC Board
6	050-3004-06	Face Plate Assembly
7	050-3004-07	Stand Off, Interface Board (Nylon)
8	050-3004-08	Switch Actuator Button
9	050-3004-09	User Interface PC Board
10	N/A	Pan Head Screw 10-14 x 3/4
11	N/A	SH Cap Screw 8-32 x 3/4
12	050-3004-12	Heat Sink Mounting Block
13	050-3004-13	Heat Sink
14	N/A	Pan Head Screw 1/4-20 x 3/4
15	N/A	Pan Head, Phillips 4-40 x 3/8
16	050-3004-16	Resistor 50W, 150 OHM
17	050-3004-17	SCR Diode Module
18	050-3004-18	Cap Plus Buss Bar
19	050-3004-19	Cap Neg Buss Bar
20	050-3004-20	Weld Ground Buss Bar
21	050-3004-21	Weld Neg Buss Bar
22	N/A	Button Head Screw 10-32 x 3/8
23	N/A	Lock Washer #10
24	050-3004-24	Weld Capacitor
25	N/A	Cable Tie
26	050-3004-26	Circuit Breaker
27	050-3004-27	Weld Cable Receptacle
28	050-3004-28	Power Cord 8'
29	050-3004-29	Strain Relief
30	050-3004-30	Nut, Strain Relief
31	050-3004-31	Power Harness
32	050-3004-32	Weld Harness
33	050-3004-33	Control Cable Harness
34	N/A	Nut 1/2 NPT
35	050-3004-35	Fan Guard
36	050-3004-36	Fan Assembly
37	050-3004-37	Operator Interface Cable
38	050-3004-38	Screen Cover
39	050-3004-39	Intake Filter
40	N/A	Pan Head Screw 10-14 x 1/2
41	N/A	Hex Nut 10-32
42	050-3004-42	D-Rings & Shoulder Strap
43	N/A	Button Head Screw 10-32 x 3/8
44	050-3004-44	Security Screw

PARTS LIST - WELD GUN



Item	Qt'y.	Part No.	Description
1	1	056-2001-13S	CD6 Control Cable Assy. 35ft.
2	1	056-2001-38S	CD6 Weld Cable Assy. 35ft.
3	2	181-3029-01	10-32 x 5/8 Pan Head Screw
4	1	060-3005-01	Rear Body Cap - Talon
5	1	050-1005-65	Right Gun Body Half
6	1	060-3010-01	Shaft Spring (Silver)
7	1	181-3029-19	10-32 x 5/8 Soc Head Screw
8	1	181-3029-20	10-32 x 3/16 Set screw
9	1	060-3028-00	Gun Shaft Block
10	1	060-3029-00	Gun Shaft
11	1	060-1004-01	Pig-Tail Weld Cable
12	1	181-3029-05	10-32 x 1/2 pan Head Screw
13	1	181-1260-01	#10 Split Lock Washer
14	2	181-3029-20	10-32 x 3/16 Set Screw
15	1	050-1003-94	Shaft Bearing
16	1	101-0601-00	Standard Faceplate
17	2	181-3029-20	10-32 x 3/16 Set Screw
18	3	181-3029-18	8-32 x 3/4 Soc Head Screw
19	1	060-3221-00	Shaft Boot
20	2	101-0801-01	Weld Gun Leg (Optional)
21	1	060-3222-07	Boot Retainer

Item	Qt'y.	Part No.	Description
22	1	060-3222-06	Boot Retainer Split Ring
23	1	101-0701-00	Weld Gun Foot (Optional)
24	2	181-1260-39	#10 Flat Washer (Optional)
25	2	181-3029-19	10-32 x 5/8 SHC Screw (Opt.)
26	1	050-1005-48	Control Cable
27	1	050-1005-70	Rubber Cable Sleeve, Small
28	1	050-1005-71	Weld Cable
29	1	050-1005-55	Rubber Cable Sleeve, Large
30	1	060-3311-46	Weld Cable Lug
31	1	060-3053-00	Trigger Micro Switch
32	1	050-1005-66	Left Gun Body Half
33	1	060-3003-00	Trigger Button Spring
34	1	050-1005-35	Trigger Button
Not Shown			
		060-3010-04	Shaft Spring (Copper)
		060-3010-02	Shaft Spring (Gold)
		060-3010-03	Shaft Spring (Black)
		060-3010-05	Shaft Spring (Red)

450 Richard Street • Miamisburg, OH 45342
www.midwestfasteners.com • Fax: (937) 866-4174
(800) 852-8352